

 Wilsonart Contract
LAMINATE



Your ideas. Realized.

Wilsonart Contract Laminate

Designed specifically to meet the decor needs of commercial projects, this collection features colorways, finishes, and patterns that coordinate easily with the other materials you specify. All Premium Laminate designs also utilize AEON™ Enhanced Performance technology, which has been proven to dramatically outperform traditional laminate for wear and scuff resistance. The collection also boasts two celebrated textures: FineGrain, with the realistic feel of polished wood and Linearity, a finely striated texture that looks as good on metals as it does on woods. To confirm pattern availability and size/type/finish options, click on Pattern Availability at wilsonart.com.

Product numbers ending in -60 or -38 are standard finish/price

Product numbers ending in -01, -07 -18, -52, or -78 are premium finish/price.

Product numbers ending in -35, -45, or -55 are High Definition finish/price.

◆ High Definition Premium

‡ Premium



Oiled Soapstone 4882-38



Green Soapstone 4885-38



Sable Soapstone 4883-38



Pearl Soapstone 4886-38



Flame Soapstone 4884-38



Tan Soapstone 4887-38



Mission Glaze 4854-38



Willowstone 4791K-52‡



Mission Adobe 4849-38



Greystone 4790K-52‡



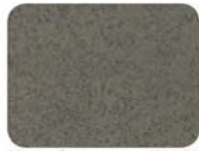
Sunstone 4781K-52‡



Limestone 4789K-52‡



Mission Smoke 4847-38



Mission Sage 4848-38



Mission Shadow 4852-38



Mission Stone 4853-38



Mission Sand 4851-38



Mission Stucco 4850-38



Carbon CV 4020-60



Radium CV 4012-60



Nickel CV 4013-60



Tungsten CV 4014-60



Gilicon CV 4011-60



Titanium CV 4010-60



Navy Legacy 4651-60



Green Legacy 4657-60



Olive Legacy 4654-60



Bronze Legacy 4656-60



Tawny Legacy 4663-60



Grey Glace 4142-60



Cloud Nebula 4630-60



Grey Nebula 4622-60



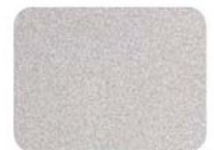
Beige Nebula 4624-60



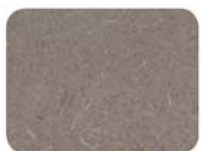
Natural Nebula 4633-60



Neutral Glace 4143-60



White Nebula 4621-60



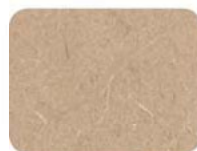
Evening Tigris 4674-60



Green Tigris 4667-60



Curry Tigris 4672-60



Natural Tigris 4669-60



Saffron Tigris 4673-60



White Tigris 4783-60

Woodgrains

◆ High Definition Premium

‡ Premium



Zanzibar 7957K-78‡



Shaker Cherry 7935K-07‡



Honduran Mahogany 7956K-78‡



Hampton Walnut 7959K-78‡



Colombian Walnut 7943K-07‡



Cocobala 7942K-07‡



Mambo 7948K-07‡



Williamsburg Cherry 7936K-07‡



Brighton Walnut 7922K-07‡



Kenya Mahogany 7958K-78‡



Figured Mahogany 7040K-78‡



Empire Mahogany 7122K-07‡



Huntington Maple 7929-38



Wild Cherry 7054-60



Amber Cherry 7919K-78‡



Biltmore Cherry 7924K-07‡



Versailles Anigre 7923K-07‡



Windsor Mahogany 7039K-78‡



Brazilwood 7946-38



Harvest Maple 7953-38



River Cherry 7937-38



Rio 7947K-18‡



English Oak 7885K-78‡



Montana Walnut 7110K-78‡



Monticello Maple 7923-38



Natural Pear 7001-00



Foothill Pear 10743-00



Tuscan Walnut 7921-38



Asian Sun 7951K-18‡



Nepal Teak 7209K-78‡



Natural Rift 7954-38



Tan Echo 7941K-18‡



Castle Oak 7928-38



Bannister Oak 7806-60



Golden Oak 7888-60



Solar Oak 7816-60



Manitoba Maple 7911-60



Kensington Maple 10776-60



Limber Maple 10734-60



Fusion Maple 7909-60



Windwept 4793-60



New Age Oak 7938-38



Beigewood 7850-60



Chardonnay 7955-38



Blond Echo 7939K-18‡



Aloe 7962K-18‡



Yarrow 7961K-18‡



Satin Stainless 4830K-18‡



Sanibel Maple 7908-60



Asian Sand 7952K-18‡



Asian Night 7949K-18‡



Studio Teak 7960K-18‡



Madagascar 7944K-01‡



Xanadu 7945K-18‡

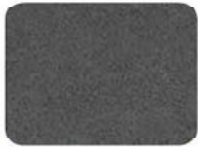
Wilsonart Contract Laminate

◆ High Definition Premium

‡ Premium



Windswept Pewter 4795-60



Western Iron 4875-60



Western Storm 4872-60



Western Hills 4874-60



Western Bronze 4873-60



Western Suede 4871-60



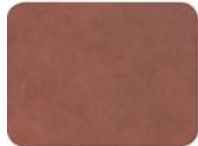
Rustic Slate 4888-38



Windswept Bronze 4794-60



Burnished Chestnut 4796-60



Burnished Ember 4798-60



Ochre Roletta 4738-60



Gilded Mesh 4912-38



Galactic Black 4799K-07‡



Polished Mosaic 4892K-01‡



Chai Tea 4910-60



Ginseng Tea 4909-60



White Tea 4908-60



Tumbled Mosaic 4893-60



Graphite Nebula 4623-60



Smoky Topaz 4589K-07‡



Brazilian Topaz 4584K-07‡



Antique Topaz 4863K-07‡



Sandy Topaz 4862K-07‡



Kalahari Topaz 4588K-07‡



Glacé Grey D91-60



Brittany Blue D321-60



Atlantia D25-60



Indigo D379-60



Lapio Blue D417-60



Woolamai Brush 4746-60



Hunter Green D79-60



North Sea D90-60



Port D14-60



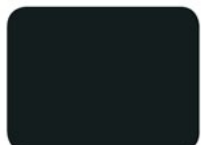
Hollyberry D307-60



Karratha Brush 4744-60



Maroochy Brush 4745-60



Black 1595-60



Shadow D96-60



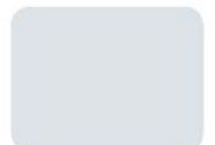
Dove Grey D92-60



Platinum D315-60



Fashion Grey D381-60



Cloud D391-60



Pepperdust D327-60



Khaki Brown D50-60



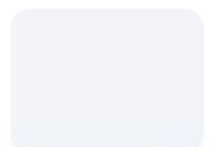
Featherstone D72-60



Haze D97-60



Grey 1500-60



White 1570-60

Wilsonart Contract Laminate

◆ High Definition Premium

‡ Premium



Western White 4869-60



Western Tan 4870-60



Gold Alchemy 4861K-07‡



Silver Alchemy 4860K-07‡



Pewter Brush 4779-60



Antique Brush 4823-60



Grey Mesh 4877-38



Soft Gold Mesh 4911-38



Pewter Mesh 4878-38



Steel Mesh 4879-38



Carbon Mesh 4880-38



Copper Mesh 4881-38



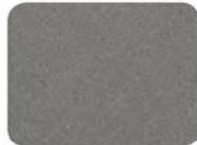
Sheer Mesh 4876-38



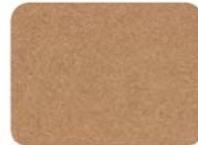
Desert Zephyr 4841-60



Misted Zephyr 4843-60



Twilight Zephyr 4845-60



Spiced Zephyr 4859-60



Morro Zephyr 4846-60



Shadow Zephyr 4857-60



Canyon Zephyr 4842-60



Crisp Zephyr 4858-60



Loden Zephyr 4844-60



Lodestone 4680-60



Oxide 1787-60



Cloud Zephyr 4056-60



Frosted Glass 4099K-01‡



Sea Glass 4900K-01‡



Dottle Glass 4901K-01‡



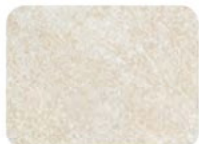
Mercury Glass 4902-00



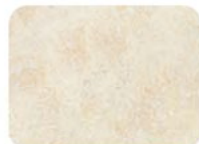
Antique Glass 4903-00



Grey Pampas 4168-60



Beige Pampas 4170-60



Caldera Beige 4608-60



Pampas 4166-60



Almond Leather 2932-60



Amazon D478-60



Wallaby D439-60



Natural Almond D30-60



Putty 1503-60



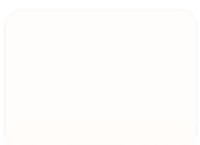
Café Crème D456-60



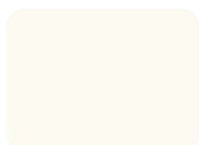
Sand D331-60



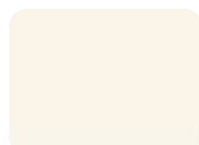
Beige 1530-60



Designer White D354-60



Frosty White 1573-60



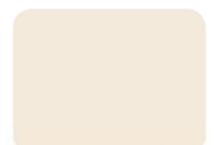
Alabaster D431-60



Antique White 1572-60



White Sand D403-60



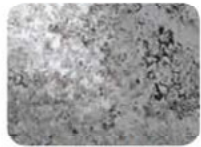
Light Beige 1531-60

Wilsonart® HD® High Definition® Laminate

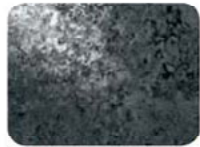
A fusion of beauty and state-of-the-art technology, Wilsonart® HD® High Definition® Laminate is the hardest wearing Wilsonart Laminate yet designed. Featuring our AEON™ Enhanced Performance technology, the collection's rich depth and dimension of designs and textures make for exceptional environments that last.



Metallic Bronze 1827K-35 ♦



Metallic Silver 1829K-35 ♦



Metallic Steel 1828K-35 ♦



Luna Night 1854K-35 ♦



Luna Crest 1852K-35 ♦



Luna Glow 1851K-35 ♦



Luna Winter 1850K-35 ♦



Luna Frost 1849K-35 ♦



Luna Shadow 1853K-35 ♦



Ebony Eclipse 1848K-45 ♦



Bronze Eclipse 1847K-45 ♦



Bella Capri 1822K-35 ♦



Bella Reale 1821K-35 ♦



Bella Venito 1819K-35 ♦



Bella Noche 1820K-35 ♦



Medallion 1846K-35 ♦



Crystalline Pearl 1837K-45 ♦



Crystalline Shell 1834K-45 ♦



Crystalline Dune 1838K-45 ♦



Crystalline Ice 1836K-45 ♦



Crystalline Braun 1839K-45 ♦



Crystalline Iris 1840K-45 ♦



Crystalline Onyx 1835K-45 ♦



Sedona Spa 1825K-35 ♦



Sedona Bluff 1024K-35 ♦



Sedona Spirit 1023K-35 ♦



Sedona Trail 1026K-35 ♦



Mystic Gemstone 1030K-35 ♦



River Gemstone 1032K-35 ♦



Raven Gemstone 1031K-35 ♦



Deepstar Glaze 1813K-35 ♦



Deepstar Fossil 1812K-35 ♦



Deepstar Bronze 1814K-35 ♦



Deepstar Agate 1815K-35 ♦



Deepstar Jade 1816K-35 ♦



Deepstar Flint 1811K-35 ♦



Deepstar Slate 1818K-35 ♦



Deepstar Mineral 1817K-35 ♦



Desert Passage 1841K-45 ♦



Canyon Passage 1842K-45 ♦



Night Passage 1845K-45 ♦



Mountain Passage 1843K-45 ♦



Alpine Passage 1844K-45 ♦

Wilsonart HD Designs are priced higher than standard and premium laminates. Not all designs are shown at 100% scale. Colors shown are printed reproductions. For maximum fidelity, please request product samples. Optional finishes may be available by special order.



Care & Maintenance

Your decision to purchase Wilsonart Laminate will bring you years of quality performance. Everyday cleaning of our products is as simple as a quick wipe with a damp sponge. All resist muddy fingerprints, coffee spills and so much more. Be sure to read and follow the recommended care and cleaning procedures.

Routine Care

To clean the surface, use a damp cloth or sponge and a mild soap or detergent.

Difficult stains such as coffee or tea can be removed using a mild household cleaner/detergent and a soft bristled brush, repeating as necessary.

If a stain persists, use a paste of baking soda and water and apply with a soft bristled brush. Light scrubbing for 10 to 20 strokes should remove most stains. Although baking soda is a low abrasive, excessive scrubbing or exerting too much force could damage the decorative surface, especially if it has a gloss finish.

Stubborn stains that resist any of the above cleaning methods may require the use of undiluted household bleach or nail polish remover. Apply the bleach or nail polish remover to the stain and let stand no longer than two minutes. Rinse thoroughly with warm water and wipe dry. This step may be repeated if the stain appears to be going away and the color of the laminate has not been affected. **WARNING:** Prolonged exposure of the laminate surface to bleach will cause discoloration.

Hot pans and heat-producing appliances (such as electric skillets), when set directly upon countertops, can mar the product's beauty. Always use a heat shield, hot pad or trivet.

A Few Notes of Caution

- Acidic or abrasive cleaners can damage laminate surfaces; do not use them.
- Drain cleaners containing lye will permanently damage any Wilsonart Laminate surface. If you spill a drain cleaner, wipe it up immediately and rinse several times with water.
- Hair, textile and food dyes can cause permanent stains. If dye should happen to spill, wipe it up immediately with dishwashing detergent or an all-purpose cleaner.
- Never place pots or dishes directly from the oven or burner on an unprotected laminate surface; such extreme heat can cause cracking or blistering.
- Do not work with oven cleaners on an unprotected countertop. Wipe spills away promptly and rinse several times with water.
- Rust removers contain harsh chemicals which will quickly cause permanent damage. If a spill occurs, wipe off all residue immediately, wash thoroughly with soapy water and rinse several times.
- Steel wool and other abrasive pads will damage Wilsonart Laminate. Don't use them for cleaning and don't store steel wool pads on your countertop; the metal can rust and leave stains.
- Toilet bowl cleaners contain harsh chemicals that can cause permanent damage. If spills occur, wipe up immediately, wash surface with soapy water and rinse several times.



RECOMMENDED HOUSEHOLD CLEANERS

- Windex®
- Glass Plus®
- Lestoil®
- Grease Relief®
- Dow Bathroom Cleaner with Scrubbing Bubbles™
- Lysol® Brand Disinfectant Basin/Tub/Tile Cleaner
- Dawn®
- Fantastik®
- Favor®
- Pledge®
- Mr. Clean®
- TOP JOB®
- Formula 409®
- Clorox®
- Isopropyl Alcohol (Isopropanol)

*Prolonged exposure to bleach will cause discoloration. When cleaning Wilsonart Laminate, DO NOT use products that contain the following ingredients:

CHEMICAL INGREDIENT	SYNONYMOUS NAMES
Hydrochloric Acid	Muriatic Acid Hydrogen Chloride
Sulfuric Acid	Oleic Acid Oil of Vitriol Oleum
Hydrofluoric Acid	Rust Remover
Phosphoric Acid	Rust Remover
Sodium Hydroxide	Caustic Soda Caustic Lye Soda Lye
Pumice (abrasive)	N/A