

Mobile Rotisserie Chicken Warmer



SPECIFICATIONS / FEATURES

BASE CABINET CONSTRUCTION

- Base cabinet to consist of 3/4" plywood panels finished in high pressure plastic laminate.
- One row of protective 1" vinyl bumpers.
- 4-3/16" Casters
- Access to electrical components located in lower display area wall
- Fixture is designed to NEC, UL and NSF standards.
- Warranty is one year parts and labor.

HEATED SHELVING

- Hot Plate with annodized aluminum surface and tempered glass product stops.
- Canopy with NSF-4 overhead warmers holds the product to proper temperature (infinite/dial control)
- NSF-4 incandescent light fixtures come with shatter resistant, coated bulbs and a separate on/off switch.
- NSF-4 heated deck plates radiate warmth uniformly keeping product at optimum temperature and have infinite (dial) control. Annodized aluminum surface is easy to clean.

ELECTRICAL REQUIREMENTS

- Unit is pre-wired and furnished with a junction box for use on a dedicated 120/208V, 60Hz, 1 phase circuit and NEMA 5-30P plug.
- All units built in strict accordance with all applicable NSF, NEC and UL standards.

STANDARD FEATURES

- Base of cabinet finished with high pressure plastic laminate (white, black or almond).
- Powder Coated Upper Section
- Stainless steel canopy.
- Heated merchandising area includes incandescent lighting and overhead heat.
- Light/Heat Control Panel on end
- Fuse Access on Control Panel
- Unit is pre-wired and furnished with a junction box for use on a dedicated 120V, 60Hz, 1 phase Circuit.
- Contact factory for assorted finishes, bar accessories and alternative configurations.
- Warranty is one year parts and labor.

OPTIONAL ACCESSORIES

- Many laminate & powder coat colors/finishes available to match store decor
- Assorted colors available for vinyl bumper.

R&D Fixtures
490 Industrial Drive
Mt. Juliet, TN 37122

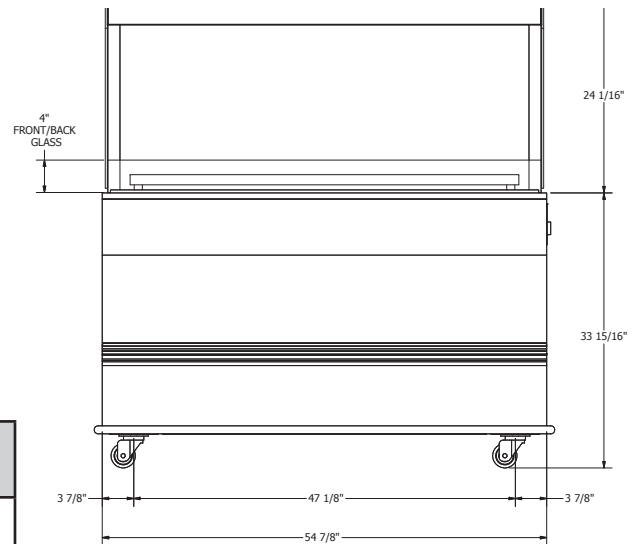
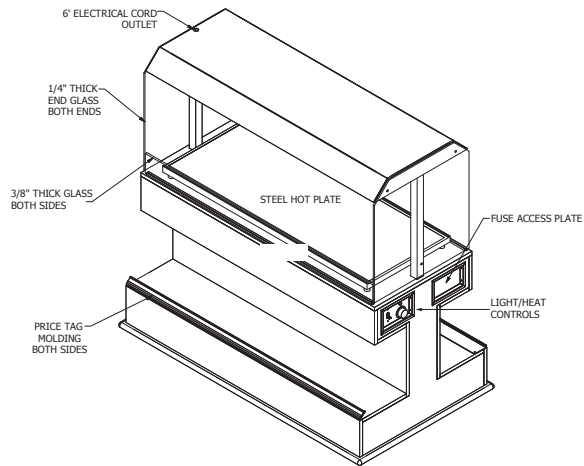
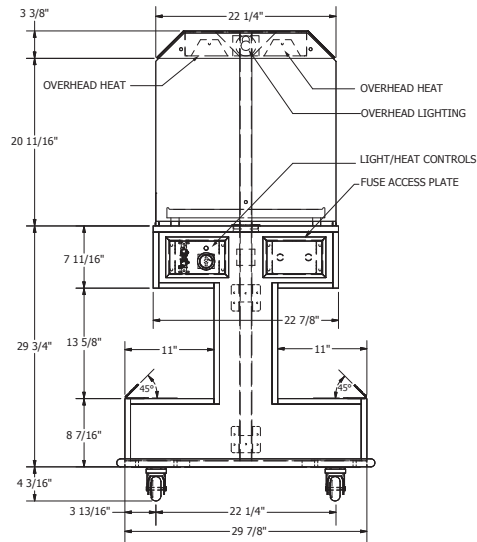
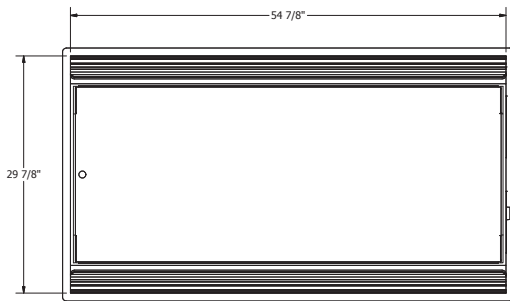
(888) 827-6820 • Fax (615) 758-1006 • www.rdfixtures.com • sales@rdfixtures.com #102 - 2012 Printed in U.S.A.

Built to meet the following regulatory specifications.



Based on operating conditions of 77°F and 55% relative humidity. Due to continuous improvements, specifications subject to change without notice.

Mobile Rotisserie Chicken Warmer



| Product Specifications | Standard | Options |
|------------------------|-------------------------------|--------------------------|
| Exterior | White, Black, Almond Laminate | Other Finishes Available |

| Mobile Rotisserie Chicken Warmer | Capacity (packaged chickens) | Dimensions (inches) | | | Volts | Phase | Amps |
|----------------------------------|------------------------------|---------------------|----|----|-------|-------|------|
| | | L | D | H | | | |
| 55" x 30" Mobile, Single Tier | 12-14 | 55 | 30 | 62 | 120 | 1 | 24 |

Numbers may be rounded. See line drawings for precise numbers.

| Electrical Requirements (wired to 6' Cord with 5-30P NEMA / 125V 30 AMP Plug) | | | | | | |
|---|-----------------------|--------------|-----------|---------|-----------|------------|
| QNTY | DESCRIPTION | Manufacturer | Model # | Voltage | Amps Each | Amps Total |
| 1 | Overhead Heat / Light | HATCO | GRAHL-48D | 120 | 15.333 | 15.333 |
| 1 | Hot Plate | HATCO | GRS-48-1 | 120 | 8.333 | 8.333 |
| Total Amps Required 120V-60HZ-1PH | | | | | | 24 |

R&D Fixtures
490 Industrial Drive
Mt. Juliet, TN 37122
(888) 827-6820 • Fax (615) 758-1006 • www.rdfixtures.com • sales@rdfixtures.com

Built to meet the following regulatory specifications.



Based on operating conditions of 77°F and 55% relative humidity. Due to continuous improvements, specifications subject to change without notice.